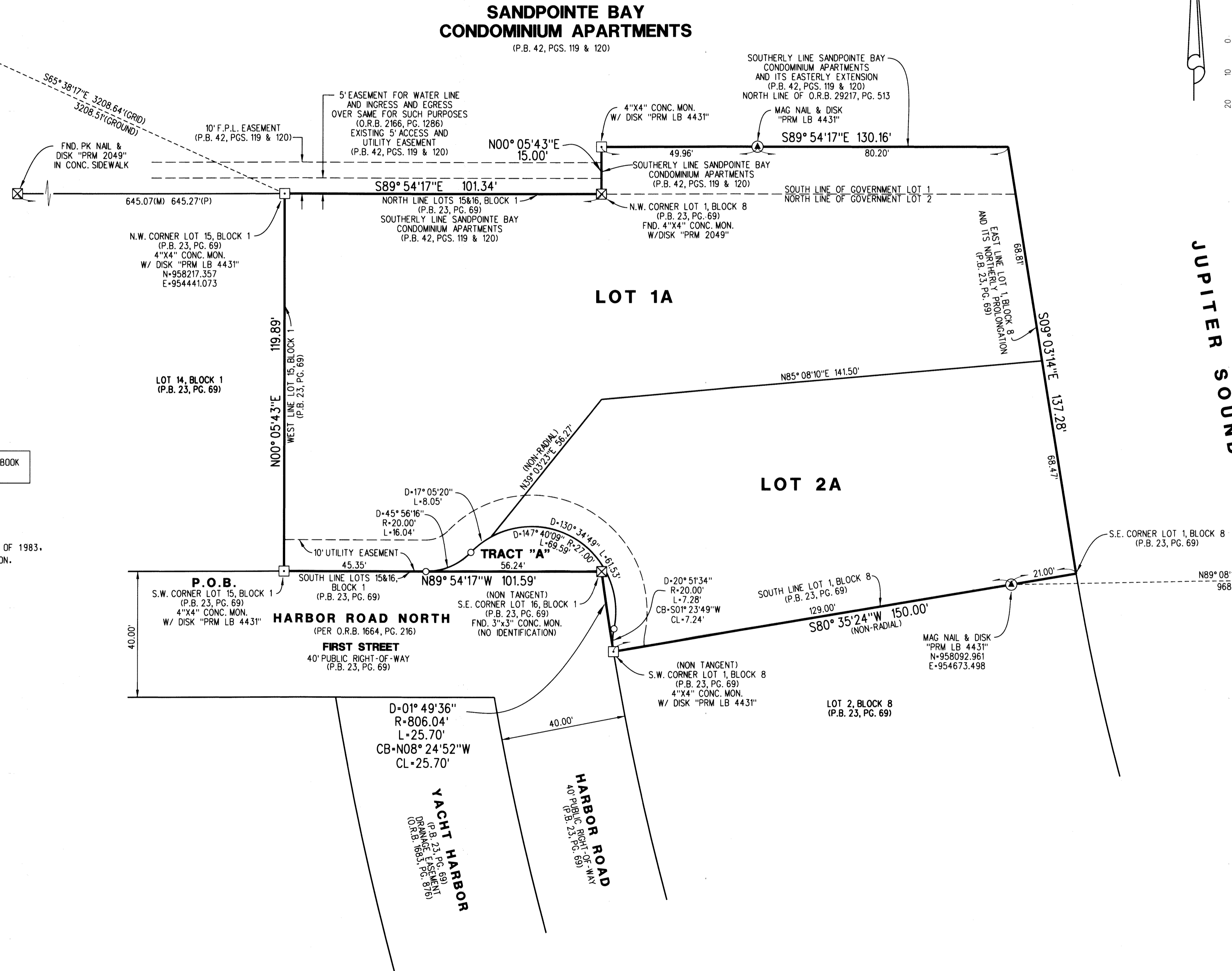
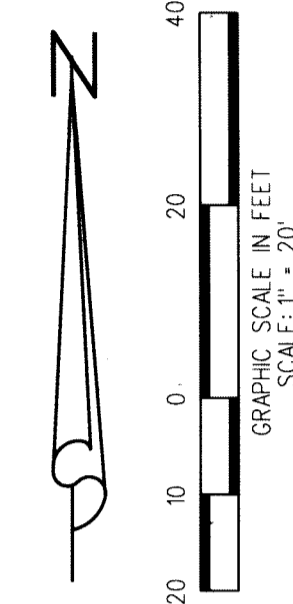


HARBOR ROAD SUBDIVISION

BEING A REPLAT OF LOT 1, BLOCK 8 AND LOTS 15 AND 16, BLOCK 1, AS SHOWN ON THE PLAT OF JUPITER HEIGHTS, AS RECORDED IN PLAT BOOK 23, PAGE 69, PUBLIC RECORDS OF PALM BEACH COUNTY, FLORIDA AND BEING A PORTION OF GOVERNMENT LOT 1, ALL LYING IN SECTION 30, TOWNSHIP 40 SOUTH, RANGE 43 EAST, PALM BEACH COUNTY, FLORIDA

N.E. CORNER OF SECTION 25-40-42
N= 959,540.9150
E= 951,518.1300
FOUND P.B.C. BRASS DISK IN CONCRETE



THIS PLAT IS BENEFITED BY AN EASEMENT AGREEMENT RECORDED IN OFFICIAL RECORD BOOK 16968, PAGE 1351, PUBLIC RECORDS OF PALM BEACH COUNTY, FLORIDA.

PLAT POSITION AND ORIENTATION:

COORDINATES SHOWN HEREON ARE GRID AND ARE BASED ON THE NORTH AMERICAN DATUM OF 1983, 1990 ADJUSTMENT (NAD83/90), FLORIDA STATE PLANE TRANSVERSE MERCATOR PROJECTION.

DISTANCES SHOWN HEREON ARE GROUND DISTANCES UNLESS OTHERWISE NOTED.

DATUM = NORTH AMERICAN DATUM OF 1983 (NAD83), 1990 ADJUSTMENT

ZONE = FLORIDA EAST

LINEAR UNITS = US SURVEY FOOT

SCALE FACTOR = 1.000042593

GROUND DISTANCES X SCALE FACTOR = GRID DISTANCE

ABBREVIATIONS:

| | | | |
|-----------|------------------------------------|------|-----------------|
| (M) | = AS FIELD MEASURED | CB | = CHORD BEARING |
| (P) | = AS SHOWN ON PLAT | CL | = CHORD LENGTH |
| CONC. | = CONCRETE | D | = DELTA |
| FND. | = FOUND | L | = LENGTH |
| F.P.L. | = FLORIDA POWER & LIGHT | R | = RADIUS |
| MON. | = MONUMENT | E | = EAST |
| O.R.B. | = OFFICIAL RECORD BOOK | N | = NORTH |
| P.B. | = PLAT BOOK | N.E. | = NORTHEAST |
| P.B.C. | = PALM BEACH COUNTY | N.W. | = NORTHWEST |
| P.O.B. | = POINT OF BEGINNING | S | = SOUTH |
| P.R.M. | = PERMANENT REFERENCE MONUMENT | S.E. | = SOUTHWEST |
| P.S.M. | = PROFESSIONAL SURVEYOR AND MAPPER | S.W. | = SOUTHWEST |
| PG. | = PAGE | W | = WEST |
| PGS. | = PAGES | | |
| R/W | = RIGHT OF WAY | | |
| U.S.C.&G. | = UNITED STATES COAST & GEODETIC | | |
| W/ | = WITH | | |

LEGEND:

- ☐ = SET 4"x4" CONCRETE MONUMENT WITH DISK - STAMPED "PRM LB 4431" PERMANENT REFERENCE MONUMENT (P.R.M.).
- ⊙ = SET MAG NAIL & DISK - STAMPED "PRM LB 4431" PERMANENT REFERENCE MONUMENT (P.R.M.).
- ⊗ = FOUND MONUMENT AS NOTED

| | | | |
|---|---|--------------|-----------------|
| LIDBERG LAND SURVEYING, INC. | | | |
| 675 West Indiantown Road, Suite 200, Jupiter, Florida 33458 TEL. 561-746-8454 | | | |
| LB 4431 | | | |
| CAD. | K:\UST \ 304043 \ JUPITER HEIGHTS \ 17-007-306 \ 17-007-306.DGN | | |
| REF. | | | |
| FLD. | | FB. | PG. |
| OFF. | R.J.W. | | DATE 05/26/2017 |
| CKD. | D.C.L. | SHEET 2 OF 2 | DWG. D17-007P |